

## **Southern Sri Lanka**

Share some of your loving moments with the Island's Southern attractions. Such as Yala, Mirissa and the dazzling coastline.

**Locations:** | Mirissa | Tissamaharama | Yala National Park | Hikkaduwa or Unawatuna | Colombo |

| **Beaches** | **Boat Cruise** | **Wildlife** |

---

### **Day 01**

*(Airport – Mirissa)*

---



At the airport you will be greeted by your very own chauffeur guide. After completing formalities at the airport, head straight to Mirissa, check-in to the hotel and rest and relax to recover from any jet lag.

## Day 02

(Mirissa)



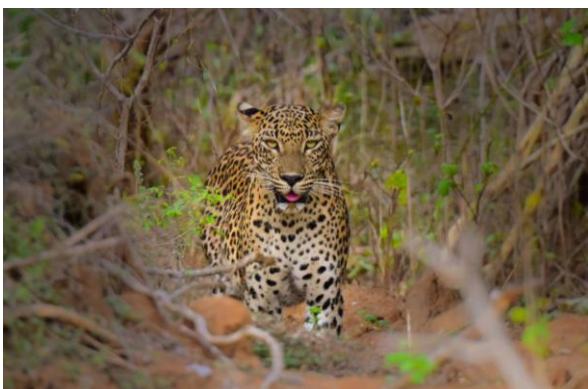
- Breakfast at the hotel.
- Mirissa is one of the world's best location for watching blue whales and sperm whales as well as pods of dolphins. This is because the continental shelf is closer to the surface at this point and hence, it is more likely to sight the world's largest animal in nature. Set off early morning on your expedition

accompanied by a local naturalists guide. Don't forget your camera to catch their tails flip.

- After and exciting experience return to the hotel and spend the evening at leisure.

## Day 03

(Mirissa - Tissamaharama)



- Breakfast at the hotel.
- Set off early morning on your expedition, as you will be heading east to the jungles of Yala. You will soon learn that the Yala National Park is famous for the elusive leopard and has one of the highest densities of leopards in the world. The Sloth bear and Asian elephants, also part of Sri Lankan's Big Five can be spotted in the park. Having said that, Yala has much more to share – wild bears, peacocks,

wild buffalo, Sambar and spotted deer. In addition, up to 130 species of birds have been recorded at Yala, many migratory including the white winged black tern, curlews and pintails. Indigenous species include jungle fowl, hornbills and orioles.

- With luck you will witness all these creatures over a full day jeep safari with a naturalist guide.
- After the safari, you head to Tissamaharama where you will check-in to the hotel to rest and spend the night.

## Day 04

*(Tissamaharama – Hikkaduwa / Unawatuna)*



crested waves as they bounce off the sun-kissed sands. It is simply amazing to be in a place where time stands still and your nights are endless.

- Breakfast at the hotel.
- At your own pace, we will head to Hikkaduwa or Unawatuna as your choice to blissfully spend your time as you wish. Whether it be indulging in fine spa & wellness programs, surfing, sunbathing, diving, mesmerized by the Indian Ocean.
- Spend an idyllic afternoon watching the

## Day 05

*(Hikkaduwa / Unawatuna – Colombo - Airport)*



- Breakfast in the hotel.
- As all good things must come to an end, your chauffeur guide will comfortably take you back to the International Airport for a safe return journey.
- Alternatively, you could always soak up some sun on Sri Lanka's pristine beaches which are as close as hour away from Colombo.

————— End of Services —————

---

---

## Terms & Conditions

---

---

### Your Holiday Includes:

---

- Per person cost of twin-sharing accommodation.
- Transport by Private air-conditioned car or van and services of English speaking chauffeur guide for arrival and departure transfer.
- Local government taxes & service charges.
- Meals: Breakfast.
- Half day safari in Yala (including jeep hire).
- Dolphin & whale watching boat cruise (including boat hire and transfer).

### Your Holiday Excludes:

---

- Visas
- Meals: Lunch & Dinner
- Travel Insurance
- Optional tours & activities
- Flights
- Airport taxes
- Activities & Highlights
- Camera & video permits at cultural sights
- All expenses of personal nature
- Tips and portage; if you are satisfied we recommend tipping your chauffeur guide
- Spa and wellness treatment
- Entrances

### Reservation, Cancellation Policy & Note

---

- All reservation subject to availability at time of booking.
- Quote is subject to availability of rooms, tax increases, price fluctuations & any peak season supplements.
- The cost is based on cash basis. For any reservation, 50% of the total tour cost should be paid 30 days prior to the arrival date and the balance payment to be paid on arrival.
- The standard check-in time in Sri Lanka is 14:00 hours and standard check-out time is 11:00 hours.
- All drive times are approximate and are subject to change.